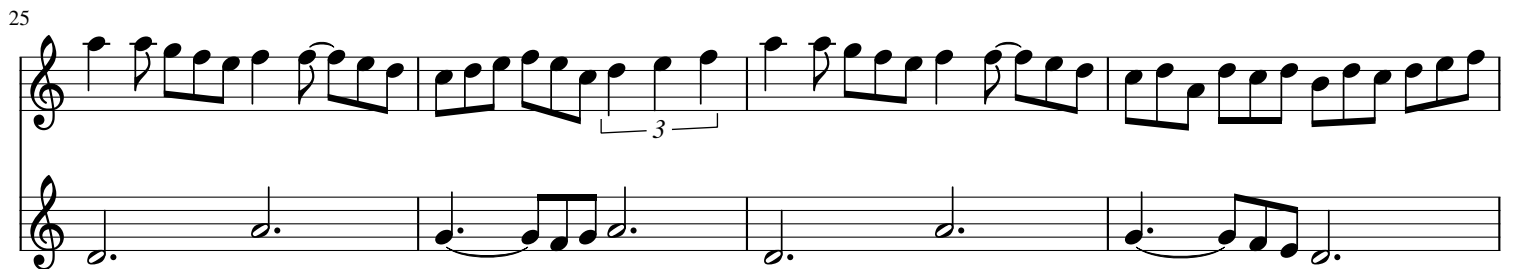
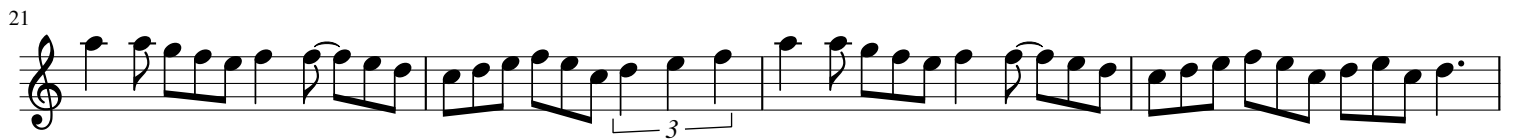
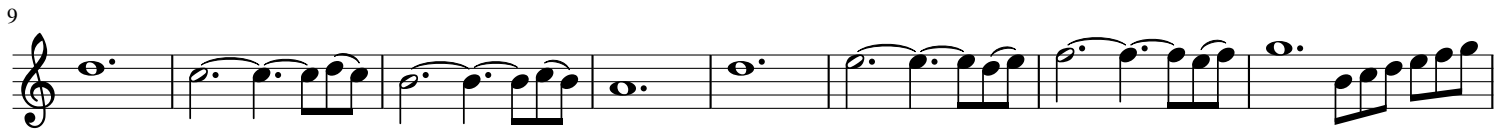
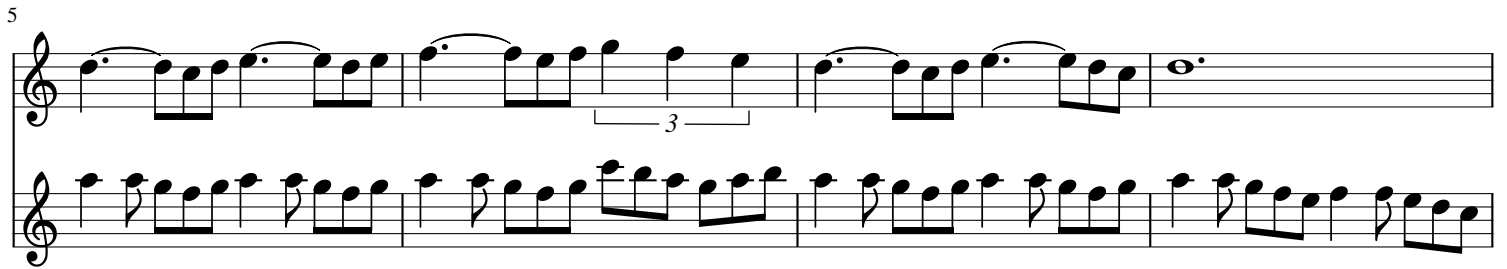
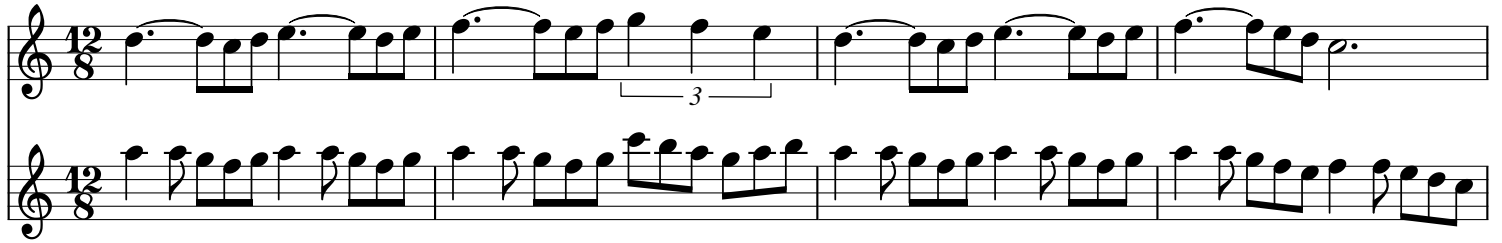


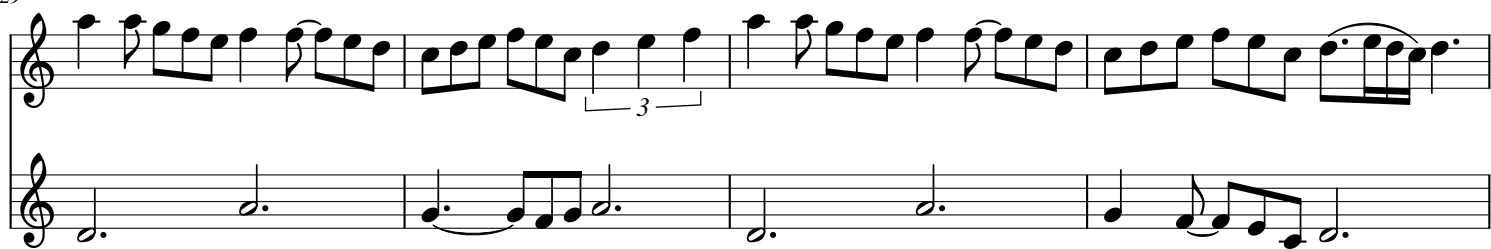
# Over the Northern Mountains

West

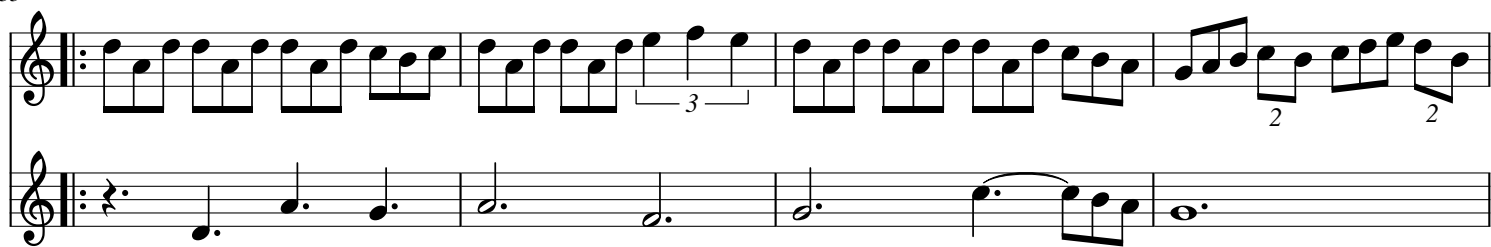
♩ = 130



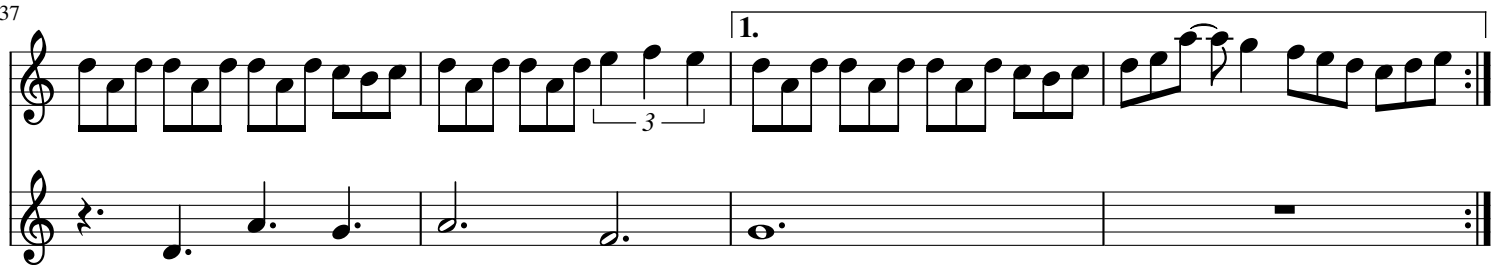
29



33



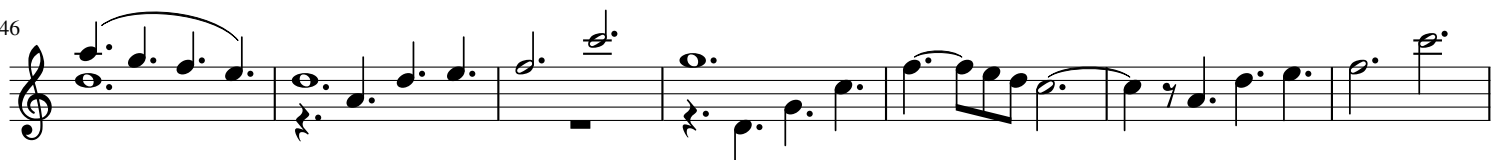
37



41



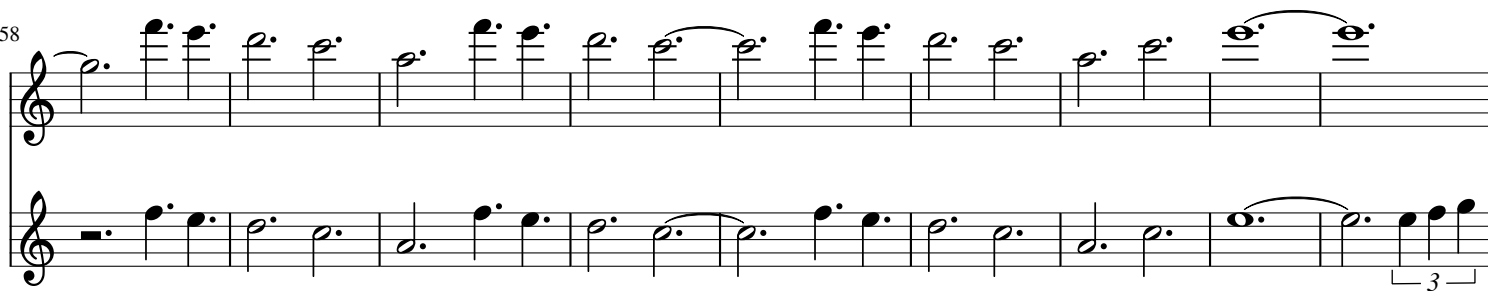
46



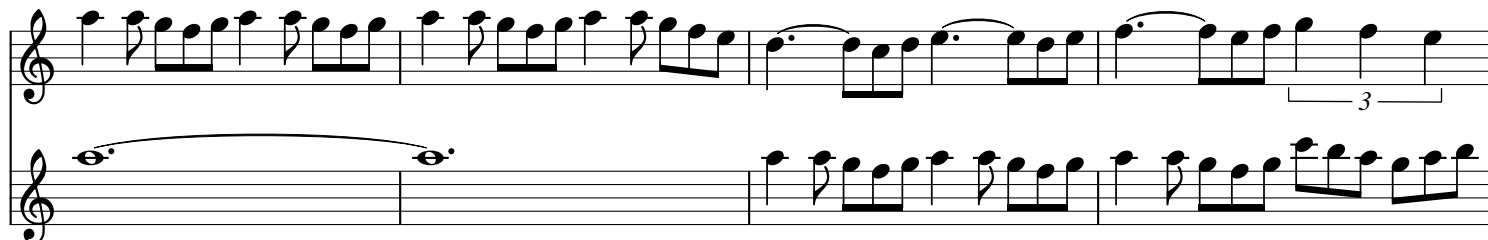
53



58



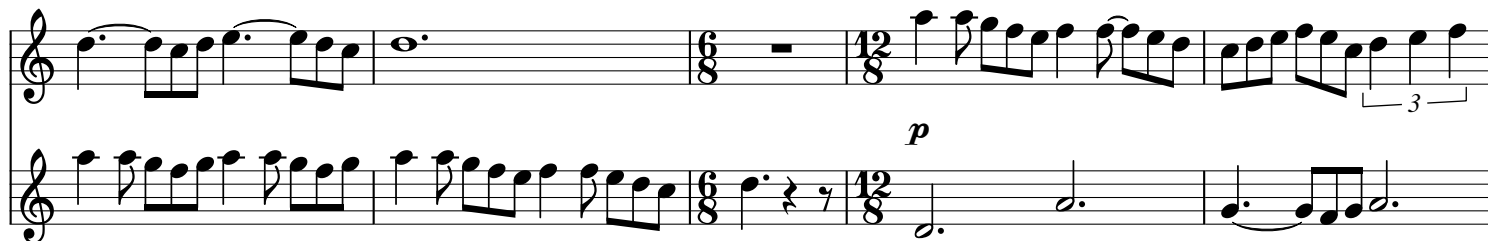
67



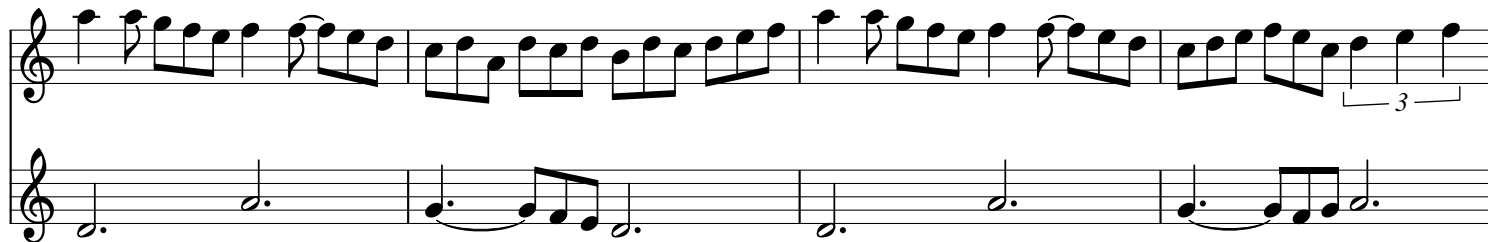
71



75



80



84

Measures 84-87 of a musical score. The top staff (treble clef) contains a complex melodic line with eighth and sixteenth notes, including a triplet in measure 87. The bottom staff (treble clef) contains a simpler accompaniment line with dotted half notes and eighth notes. A dynamic marking *f* (forte) is placed above the bottom staff in measure 85.

88

Measures 88-91 of a musical score. The top staff (treble clef) continues the melodic line. The bottom staff (treble clef) features a triplet of eighth notes in measure 89.

92

Measures 92-95 of a musical score. The top staff (treble clef) continues the melodic line. The bottom staff (treble clef) contains a sequence of dotted half notes. A bass clef is introduced in measure 94.

96

Measures 96-99 of a musical score. The top staff (treble clef) contains a continuous stream of eighth notes. The bottom staff (bass clef) contains a sequence of dotted half notes.

100

Measures 100-102 of a musical score. The top staff (treble clef) ends with a triplet of eighth notes in measure 100. The bottom staff (bass clef) contains rests in measures 100 and 101, followed by a short melodic phrase in measure 102.